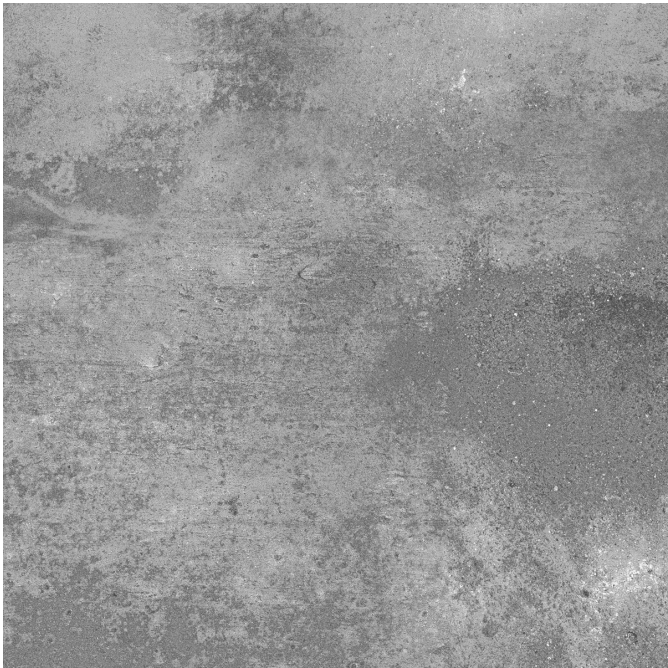


# Product Specifications - Beaumont Tiles

## WAREHOUSE DARK GREY MATT TILE

1008991 | 450x450mm

|                              |             |
|------------------------------|-------------|
| Range Name                   | Warehouse   |
| Colour                       | Grey        |
| Surface Finish               | Matt        |
| Exclusive to Beaumonts       | Yes         |
| Country of Origin            | CHN         |
| Undulation                   | Flat        |
| Wear Rating                  | 3           |
| Slip Rating                  |             |
| Variation                    | V4          |
| Tile Type                    | Monocottura |
| Tile Thickness               | 8mm         |
| Edge                         | Pressed     |
| Number of Faces              | 4           |
| Pieces Per Pack              | 5           |
| Pieces Per Sqm               | 4.94        |
| Weight Per Sqm               | 18.27kg     |
| Wet Barefoot Ramp Test       |             |
| Light Reflectance Value      |             |
| % Crystalline Silica Content | 32.00%      |
| Porosity                     | > 3% <= 6%  |



Details are correct at the time of printing, however we reserve the right to correct any error which may occur from time to time. Please refer to your Beaumonts specialist to confirm all details and product availability.

The information provided in this Product Tech Spec Sheet is accurate, however you will need to make your own enquiries as to the intended use or application of the product.

### Beaumonts Guide to Tile Rating information



Let us help you find the perfect tile. This handy guide explains Wear and Slip Ratings and how Variation impacts the look of your project.

### Beaumonts Exclusive Floor Tile Visualiser



To see floor tiles live in your space, note the product number above and scan the QR code. See floor tiles live in your space!

