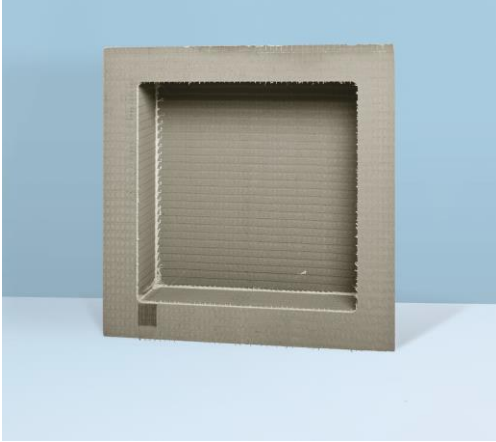


wedi® Prefabricated Niches



Square
Niche



Rectangular
Niche
With Adjustable
Shelf

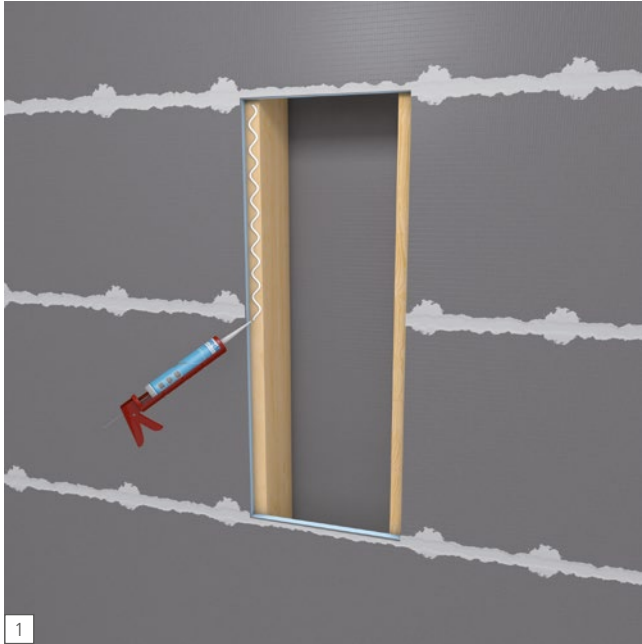
wedi prefabricated niches are made of 100% internally waterproof, high density XPS foam and a modified cement-based coating reinforced with fiberglass mesh. They install quickly and integrate flush into a 1/2" wall panel assembly.

Assembly Instruction

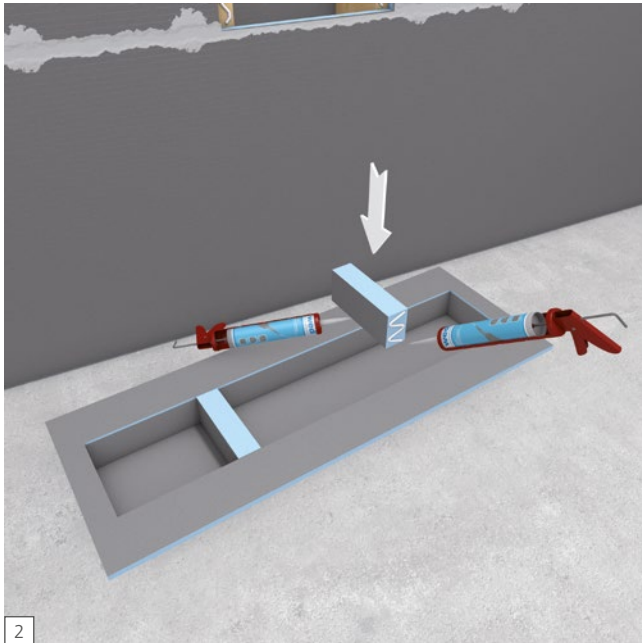


wedi Niche

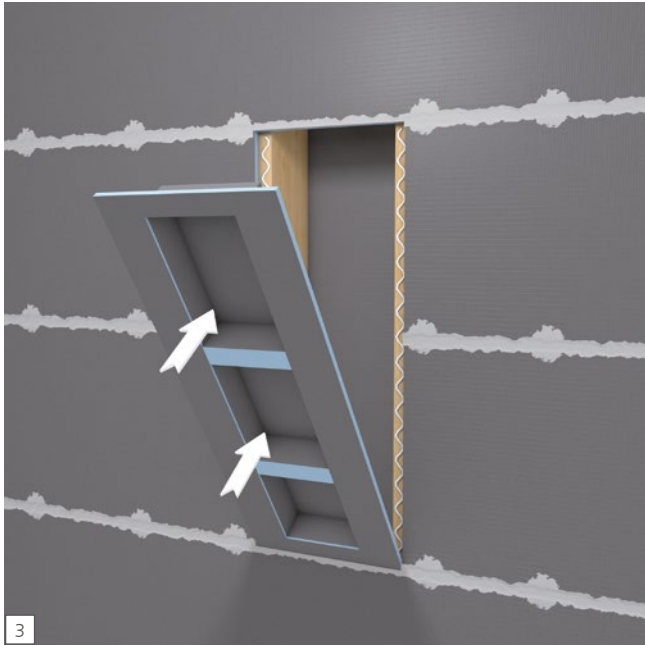
70 Rectangular | 90 Square | 90 Rectangular



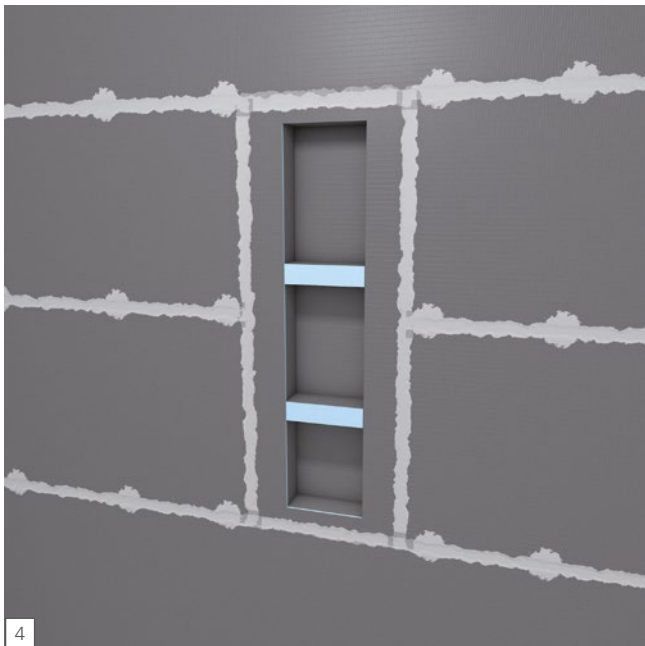
Measure and cut out a space of the existing 10 mm wall panel in an area of 450 mm width so that the Niche Flanges can rest on the framing studs on both sides and line up flush with the surrounding wedi board.



When available, wedi shelf units can be installed by gluing these into the interior of the niche and flush with its front. wedi Joint Sealant or a 100 % silicone may be used to adhere the shelf on all three sides. In addition, all transitional seams from shelf to niche have to be covered with such sealant which must be spread flat over these seams. A pitch in for the shelf will not be necessary due to the small area but may be introduced during tiling through slight pitching of the tiles.



Apply a bead of wedi Joint Sealant onto the exposed stud, as well as along the inside edges of the wall panel.



Insert the wedi Niche into the opening.

Apply a bead of wedi Joint Sealant along the outside seam and smooth out with a putty knife to cover and waterproof the seam.

If a wedi Building Panel is used, it is recommended to use 2 wedi washers and fasteners in the transition seams between the niche and wedi panel to create a 100% flush transition. The washers are then waterproofed using wedi Joint Sealant.