



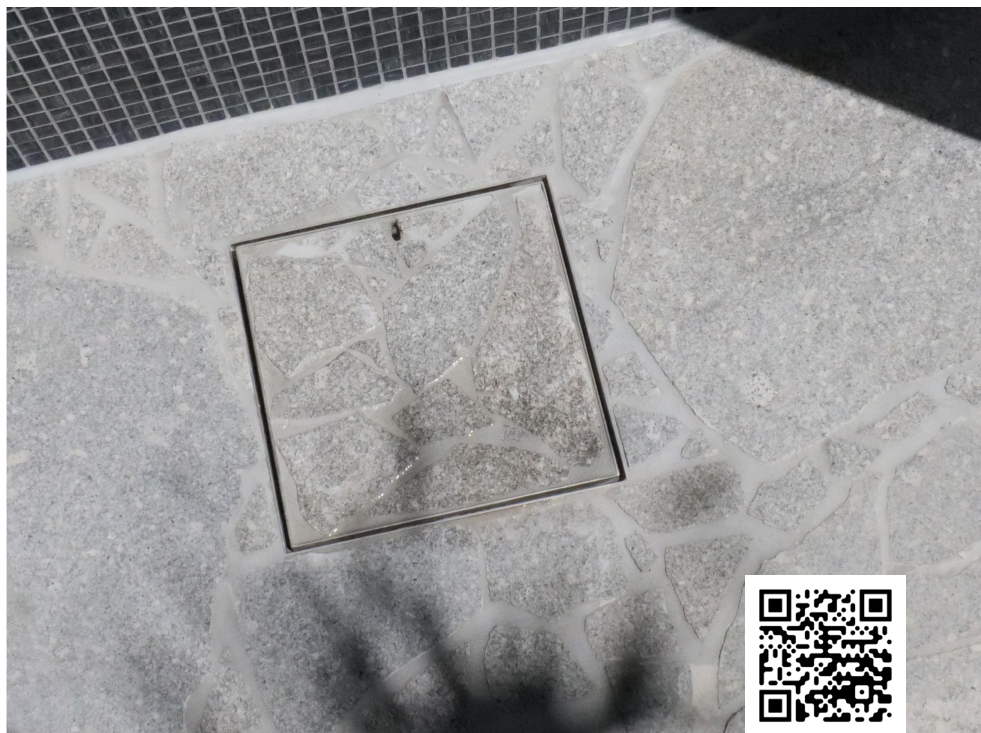
Exterior Inlay Covers

BEAUMONT TILES

HIDE®

AUSTRALIAN MADE

Drain Covers



Beautifully integrated exterior inlay covers that blend seamlessly into your landscape.

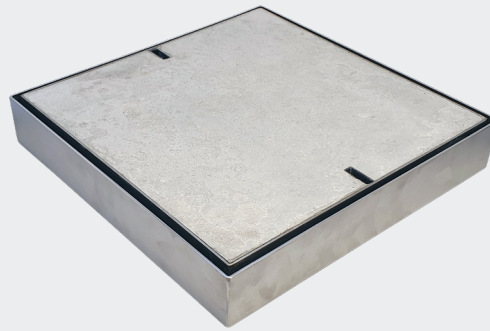
The HIDE® system seamlessly integrates your chosen inlay material into the drain cover, allowing it to harmonize with the surrounding landscape for a sleek, uninterrupted appearance.

HIDE's advanced lids for skimmer boxes, access points, and drain covers deliver a refined, high-end finish. They are offered in an extensive selection of sizes and depths to accommodate a variety of inlay material installations.

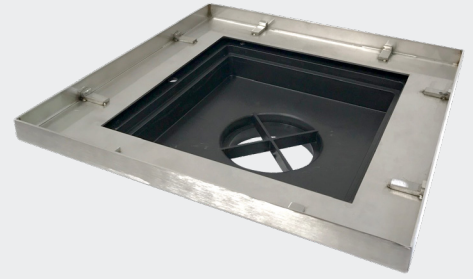
The kit includes: 1 x stainless steel lifting key, 1 x adhesive, 1 x height adjuster, 1 x Infill Lid & 1 x Edge Protector. Documentation is also included.



VARIOUS SIZED KITS

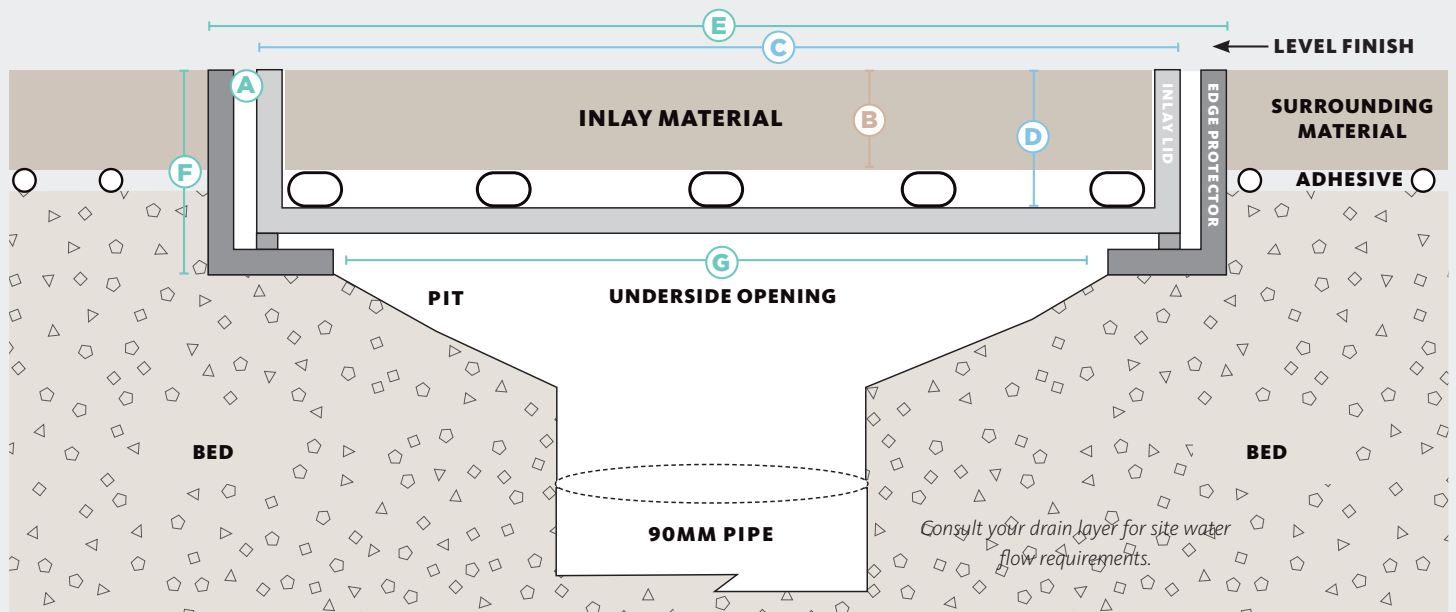


CONCRETE DRAIN COVER



DRAIN EDGE PROTECTOR

Cross section view of completed Drain Cover install



314mm Drain Cover Kit

BT CODE	HIDE KIT PRODUCT ORDER CODE	CONCRETE THICKNESS mm	INLAY LID		EDGE PROTECTOR FRAME		
			SIZE mm	INTERNAL DEPTH	SIZE	EXTERNAL DEPTH	UNDERSIDE OPENING

314mm Drain Cover Kit

	A	B	C	D	E	F	G
	HDC314-10	8-11	300 Square	12	314 Square	23	220 Square
1214418	HDC314-20	15-22		23		33	
1214419	HDC314-30	25-32		33		43	
	HDC314-40	35-42		43		53	

314mm Drain Cover Kit - Concrete Wet-Pour

	HDCON314-40	43	300 Square	43	314 Square	53	220 Square
--	-------------	----	------------	----	------------	----	------------



Scan this QR Code to discover the complete HIDE product lineup.

